

PLAN NO. 2K1432

SMITH RESIDENCE

35 MAPLE LANE  
OAKVILLE, ONTARIO

DATE: SEPTEMBER 2014

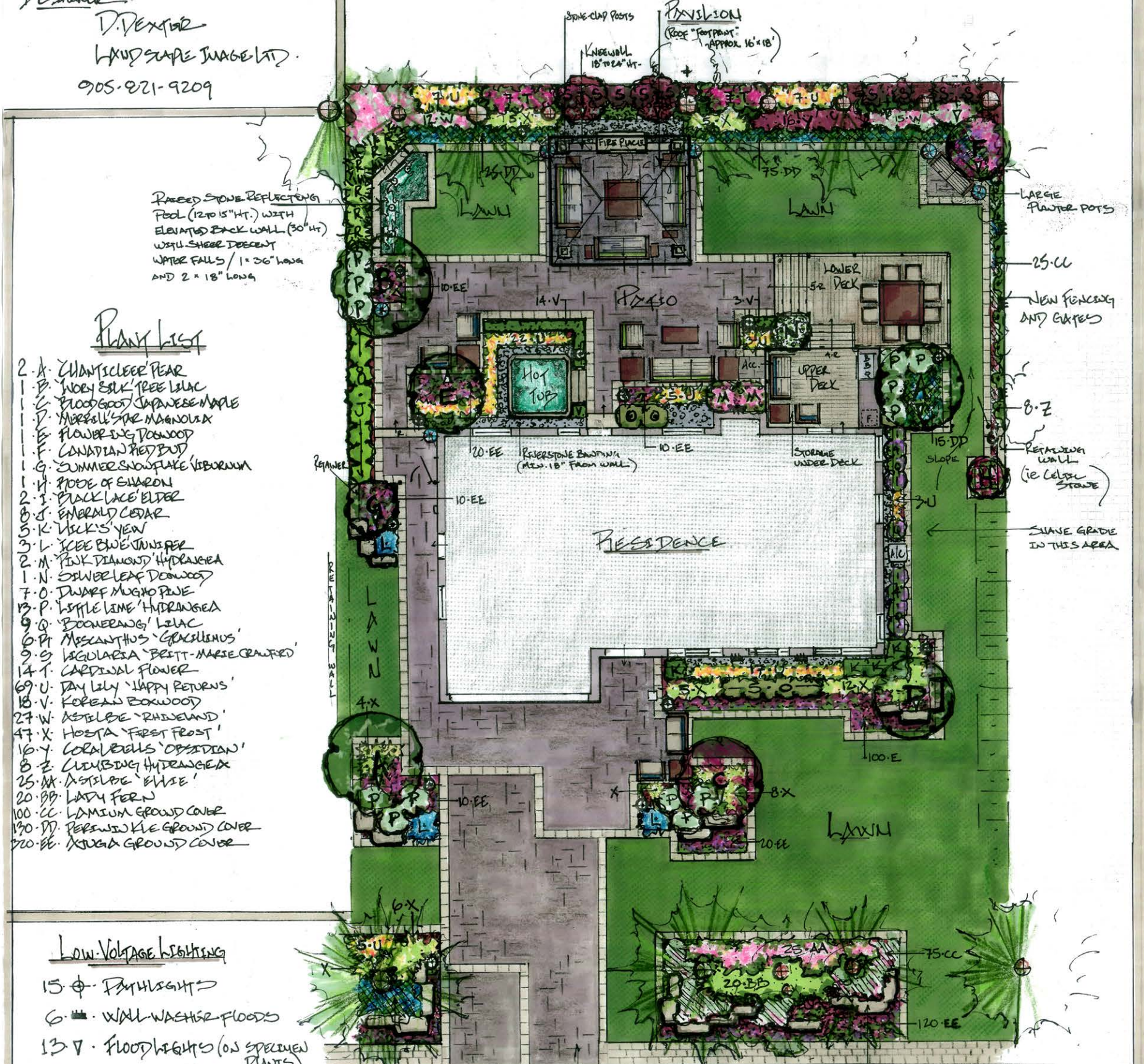
SCALE: 1" = 8'-0"

DESIGNED BY:

D. DEXTER

LANDSCAPE IMAGE LTD.

905-821-9209



PLANT LIST

- 2-A. CHANTICLEER PEAR
- 1-B. WOOLY ESK. TREE LILAC
- 1-C. BLOODGOOD JAPANESE MAPLE
- 1-D. MERRILL'S STAR MAGNOLIA
- 1-E. FLOWER BUD DOGWOOD
- 1-F. CANADIAN RED BUD
- 1-G. SUMMER SNOWFLAKE VIBURNUM
- 1-H. FROE OF SHARON
- 2-I. BLACK LACE ELDER
- 1-J. EMERALD CEDAR
- 5-K. WICK'S YEW
- 3-L. ICEE BLUE JUNIPER
- 2-M. PINK DIAMOND HYDRANGEA
- 1-N. SILVER LEAF DOGWOOD
- 7-O. DWARF MUGHO PINE
- 13-P. LITTLE LIME HYDRANGEA
- 9-Q. BOONERANGS' LILAC
- 6-R. MISCANTHUS 'GRACILINUS'
- 9-S. LEGULARIA 'BRITT-MARIE CRAWFORD'
- 14-T. CARDINAL FLOWER
- 69-U. DAY LILY 'HAPPY RETURNS'
- 18-V. KOREAN BOXWOOD
- 27-W. ASTILBE 'RAVENHAWK'
- 47-X. HOSTA 'FIRST FROST'
- 16-Y. CORAL BELLS 'OBSSIDIAN'
- 8-Z. CLIMBING HYDRANGEA
- 25-AA. ASTILBE 'ELITE'
- 20-BB. LADY FERN
- 100-CC. LAMIUM GROUND COVER
- 130-DD. PERENNIAL GROUND COVER
- 220-EE. XERUS GROUND COVER

LOW-VOLTAGE LIGHTING

- 15-Φ. PATHLIGHTS
  - 6-■. WALL WASHERS/FLOODS
  - 13-∇. FLOODLIGHTS (ON SPECIMEN PLANTS)
  - 4-○. UNDERWATER FLOODS (WATER FEATURE)
  - 8-—. MINI ACCENT NICHELIGHTS (ON PAVILION STONE POST BASES)
- \*ALSO 6 FLOODS AIMED AT LARGE SPACES AT BACK

2 COLOUR PAVING STONE DETAIL (OR COMBINE MATERIALS SUCH AS EXPOSED AGGREGATE AND NATURAL STONE)

23 ARMORSTONE ROCKS / 12 TO 15 TONS (6" TO 18" ABOVE GRADE AVE. 36" LONG X 18" WIDE) "HAMPSHIRE COLOUR TON"